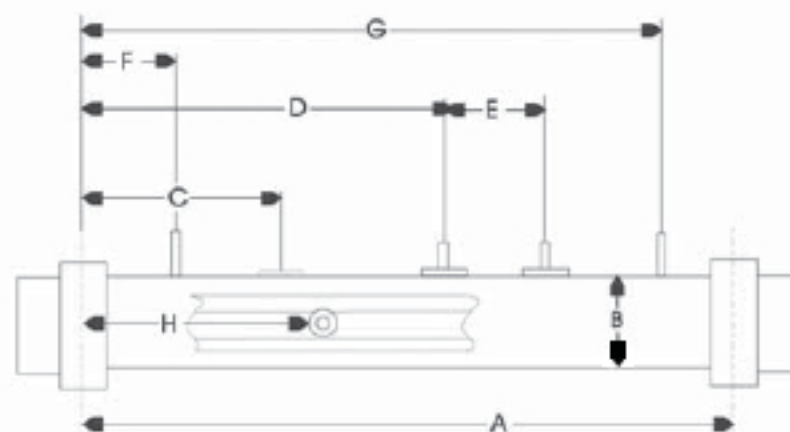


SBSG P/N	MFG P/N	ELEMENT	DESCRIPTION	A	B	C	D	E	F	G	I
2-00-0109	C2550-0056ET	2-05-0801	5.5 KW, 220 V AP-1/EP-1/LX-15/LX-35 (E.T.)	15"	2.0"	2 7/8"	4 1/4"	1 1/4"	1 3/4"	11 7/8"	5
2-00-0110	C2400-0056-ET	N/A	4.0 KW, 220 V EP-1 (E.T.)	15"	2.0"	2 7/8"	4 1/4"	1 1/4"	1 3/4"	11 7/8"	5
2-00-0040	C2400-0056	2-05-0069	4.0 KW, 220 V AP-1/1400/EP-1/LX-15	15"	2.0"	2 7/8"	4 1/8"	1 1/4"	1 7/8"	11 7/8"	5
2-00-0013	C2550-0056	2-05-0025	5.5 KW, 220 V AP-1/1400/EP-1/LX-15/LX-35	15"	2.0"	2 7/8"	4 1/8"	1 1/4"	1 7/8"	11 7/8"	5
2-00-0048	C2400-1002	2-05-0069	4.0 KW, 220 V AP-4/LX-10	12"	2.0"	6 1/2"	7 7/8"	1 1/4"	4 7/8"	10 1/8"	5
2-00-0052	C2550-1002	2-05-0025	5.5 KW, 220 V AP-4/LX-10	12"	2.0"	6 1/2"	7 7/8"	1 1/4"	4 7/8"	10 1/8"	5
2-00-0015	20-00407	2-05-0025	5.5 KW, 220 V Freedom	19"	2.0"	3.0"	4 3/8"	1 1/4"	2.0"	12"	5
2-00-0060	C2250-0003	N/A	2.5 KW, 220 V Heat Module	15"	2.0"	3 3/4"	9 1/8"	1 1/4"	3 1/2"	11 1/2"	6
2-00-0103	C1100-0211	2-05-0105	1.0 KW, 110 V PS-1	8 3/8"	1.5"	2 3/4"	4 1/8"	1 1/4"	1 5/8"	6 6/8"	5
2-00-0085	C2550-0155	2-05-0025	5.5 KW, 220 V Hercules	18"	2.0"	9 5/8"	11 1/8"	1 1/4"	4"	16"	3
2-00-0065	C2550-0256	2-05-0025	5.5 KW, 220 V LX-20/25/30	15"	2.0"	2 1/2"	9 1/2"	1 1/4"	1 5/8"	13 5/8"	5



- A = Tube Length
- B = Tube Diameter
- C = Pressure Switch
- D = Heater Terminal
- E = Heater Terminal
- F = Mounting Bolt
- G = Mounting Bolt
- H = Thermo-shield
- I = Thermo-shield location



I. Thermo-shield Location

